

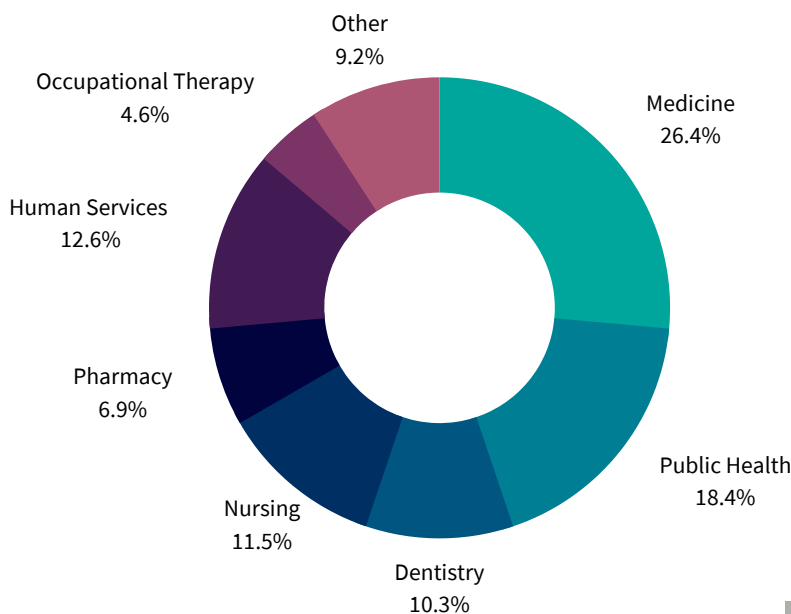


NUMBER OF ASF SAMFORD FELLOWS SINCE 2016: **6**
1,003 HOURS SERVED SINCE 2016

VALUE OF SERVICE

TOTAL VALUE OF SERVICE: **\$24,964.96**

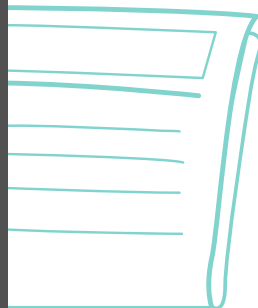
INTERDISCIPLINARY ENVIRONMENT



Pictured left: A breakdown of the variety of disciplines among all Alabama Schweitzer Fellows since 2016. Please note the Human Service category includes the disciplines of Counseling, Psychology, Social Work, and Health Administration.

MEDIA MENTIONS

Our 2020 Fellows across all universities were featured in 14 articles in the 2020-2021 year, available [here](#). Some Fellows for Life, including one from Samford, were featured.



Pictured above: 2020 Alabama Schweitzer Fellows attending the 2020 Orientation sessions.

ASF FELLOWS AT SAMFORD UNIVERSITY

FELLOWS FOR LIFE



Domecia Brown

College of Health Sciences,
McWhorter School of
Pharmacy
2019-20 ASF Fellow for Life
Community Site Partners:
More Than Conquerors Faith
Church and Bethesda Family
Life Center



William Gafford and Newton Tinsley

Ida Moffett School of Nursing
2017-18 ASF Fellow for Life
Community Site Partner:
UnlessU



Meg Boothe

College of Health Sciences,
McWhorter School of
Pharmacy
2018-19 ASF Fellow for Life
Community Site Partners:
South Highlands Outreach
Project (South Highlands
Presbyterian Church)



Caitlyn Cleghorn

College of Health Sciences,
McWhorter School of
Pharmacy
2016-17 ASF Fellow for Life
Community Site Partner: St.
Vincent's Birmingham
Access to Care Clinic

FEATURED MEDIA MENTIONS:

- [Empowering African-American Churchgoers in the Fight Against Heart Disease](#)
- [The Project of Two Alabama Schweitzer Fellows for Life Find Relevancy in the Midst of the Coronavirus Pandemic](#)
- [Five Years Later: A Q&A with 2016 Fellows for Life \(FFL\), Caitlyn \(Cleghorn\) and Dustin Whitaker](#)



CURRENT FELLOW



Madison Hartley

College of Health Sciences, McWhorter School of Pharmacy
2021-22 ASF Fellow
Community Site Partner: Changed Lives Mobile Clinic

Hartley is addressing diabetes management in North Birmingham by establishing a health navigator program at the Foundry Ministries' Changed Lives Mobile Clinic. The project will work to increase prediabetes screening at the clinic as well as support positive lifestyle changes and individual goals for patients enrolled in the program.

To read more about the Fellows' projects, please visit asf.alabama.org/fellows.