

ALBERT SCHWEITZER
FELLOWSHIP OF
ALABAMA

Impact Report

2024-25

Table of Contents

3

Greetings

4

Purpose

5

Impact

6

People

7

Method

8

Partners

9

Outcomes

10

Gratitude



THE ALBERT
SCHWEITZER
FELLOWSHIP®
ALABAMA

Greetings: from our Executive Director

Dear Friends and Supporters,

As we look back on the past year, I'm deeply grateful for the incredible community that fuels our mission. Your steadfast support has helped us navigate challenges, embrace new opportunities, and continue making a meaningful impact.

This report reflects more than just outcomes—it's a testament to what's possible when people come together with shared purpose. Every success stems from your belief in our work—our Board, volunteers, donors, and partners—all playing a vital role in what we've accomplished.

In the pages ahead, you'll see stories of lives changed, barriers broken, and progress made—each made possible by your support.

It is both humbling and inspiring to lead an organization so deeply committed to removing barriers to care and driving lasting change in the systems that influence health and well-being.

Together, we'll continue to listen with care, act with purpose, and deepen our impact in the communities we serve.



Thank you for your belief in this work and in our shared vision. I look forward to all we will accomplish together.

Kimberly Eaton



"In my future ... career, I will ask more questions. ... What other problems does your patient encounter in your chair? Do they have a safe place to sleep at night? Do they have health insurance? Do they have food security? The ASF Fellowship taught me to serve people with a thoughtful mindset. ... I am now confident to address more complex issues to serve patients fully."

**—Malia McDowell
Optometry, UAB**

Our Purpose:

To **equip and empower** graduate and professional students in Alabama with the **leadership skills** to address unmet health care needs for **underserved communities**.

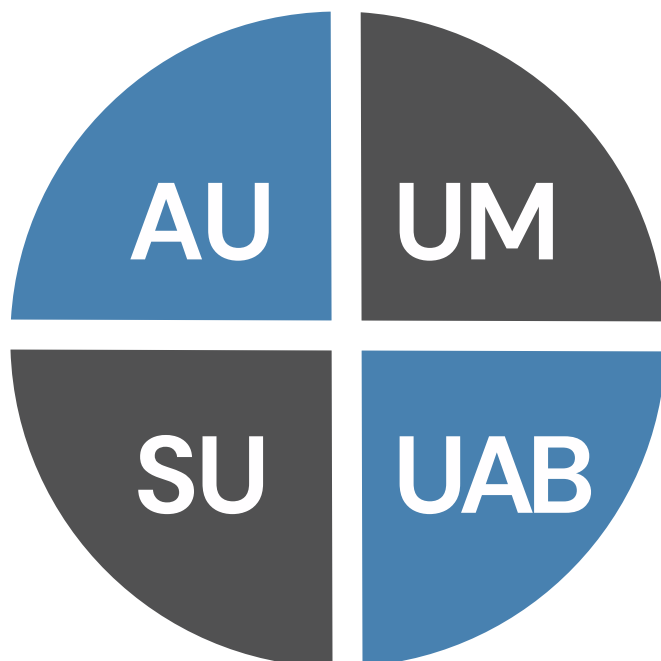
Our Process

While completing a 15-month leadership development program, Fellows work alongside communities to **create lasting impact through service, education, and empowerment**. In 2025, Fellows will lead **31 team-based projects** that tackle barriers to health and wellness across Alabama.



Established in 2015, ASF of Alabama is **1 of 10 chapters nationwide**

2025-26 Fellows Represent
4 University Partners &
10 Health Disciplines



Auburn University

- audiology
- nursing
- pharmacy

University of Montevallo

- counseling

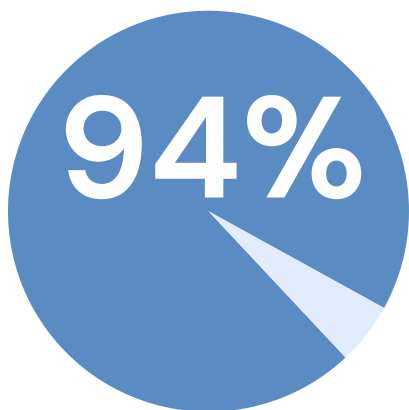
Samford University

- pharmacy

University of Alabama at Birmingham

- environmental health sciences
- health behavior
- medicine
- nursing
- nutrition sciences
- optometry
- public health

Our Impact:



of Fellows said they were “extremely likely” or “likely” to engage in community service activities with underserved populations throughout their career.



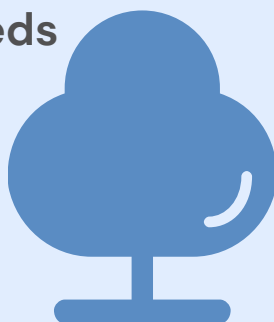
Ben Honan, Medicine, UAB

“My time as a Schweitzer fellow has held up a mirror to me, challenging me to challenge my own assumptions.”

94%

of Fellows reported reported growth in foundational skills

community needs



advocacy for underserved

collaboration across differences



cultural integration

Our People:

By investing in graduate and professional students studying health disciplines, the Schweitzer Fellowship creates a pipeline of emerging health leaders uniquely equipped to advance health equity throughout the state.



Titusville Development Corp
Housing Families

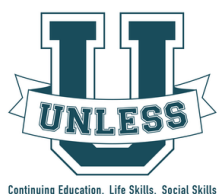


DAVID MATHEWS
CENTER for CIVIC LIFE

COMMUNITY OF HOPE HEALTH CLINIC
CHHC
Volunteers in Medicine



CAHABA
VALLEY
HEALTH
CARE



Continuing Education. Life Skills. Social Skills



MACH
Mid-Alabama Coalition for the Homeless

57 NORTH
HAMPTON
cope learn thrive

MAGIC CITY
Wellness Center



HEALTHY COMMUNITIES

JEFFERSON COUNTY
FAMILY RESOURCE CENTER



**CHANGED
LIVES
MOBILE
CLINIC**



20 Fellows

1,688 Alabamians
Served

14 Community/
Nonprofit Partners

3,202 Hours
of Service

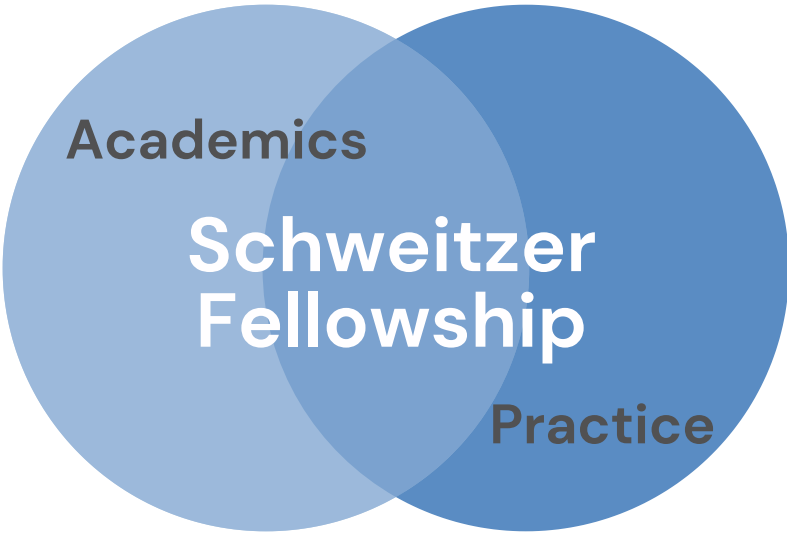
Service Value:
\$97,949*

2024-25
by the
Numbers

*according to the annual rates of a volunteer hour in Alabama
Source: Independent Sector

Our Method:

The Schweitzer Fellowship embodies a collaborative model of learning and service



programVALUES	
multiDISCIPLINARY operating in the intersection of academics and practice	directSERVICE 200–400 hours of service per project to each community partner
sharedLEARNING cross-collaboration and exposure to diverse fields of study	self REFLECTION cultivating a growth mindset that views failures as opportunities for growth



“My time as a fellow deepened my passion for serving others and gave me a newfound appreciation on what it means to be a leader.”

Our Partners:

Community Investment through Service



Fellows help nonprofits grow their reach by supporting new and expanded programs, leading to greater client engagement and deeper community impact.

In turn, community partners offer trusted relationships, real-world insight, and mentorship—serving as co-educators who guide learning through meaningful service.



55

hours of
leadership
training to
every Fellow

89

community or
nonprofit partner
organizations
since 2015

150– 200

service hours
given per Fellow
to each partner

Fellows partner with community organizations to develop innovative projects addressing diverse health needs.

Stakeholder interviews, research into best practices and feedback from community partner mentors guide each project plan and help **ensure projects yield measurable change.**

Since 2016, Alabama's Schweitzer Fellowship has:



Partnered with 89
Community Partners

Carried Out 29,500
Hours of Service

Invested \$793,714 in
Community Partners

Completed 114
Service Projects

Developed 169
Health Leaders

Thank you for partnering with us



Medical Properties Trust

INDEPENDENT
PRESBYTERIAN CHURCH
FOUNDATION



The Daniel Foundation[®]
OF ALABAMA

The Hugh Kaul
Foundation



Ogletree
Deakins



Jefferson County Department of Health
Public Health Advised Fund



CITY GEAR

Thank You to Our Leadership

Board of Directors

April Mize (President), Hoar Holdings
Becky Patterson (Vice President), BCBS
Ben Coffman (Treasurer) Protective Life
Nathan Gordon (Secretary), Baker Donelson
Scott Barry, Diversified Energy Company
Josh Bruce, Birmingham AIDS Outreach
Jack Carney, Carney Law
LaClaire Douglass, Southern Company
Morgan Epperson, Ogletree Deakins



Rebecca Horn, Children's of Alabama
Tiffany Storey, Storeyhouse Counseling & Consulting
Mikel Wijayasuriya, Alabama Power Company

Advisory Council

Dr. Deborah Bowers, UAB School of Nursing
Dr. Keisha Brown, UAB School of Optometry
Dr. Michael Crouch, Samford University, Pharmacy
Katie Ellison, UAB School of Health Professions
Dr. Caroline Harada, UAB Heersink School of Medicine
Dr. Craig Hoesley, UAB Heersink School of Medicine
Dr. Melanie Hart, UAB School of Health Professions
Dr. Stefan Kertesz, Birmingham VA Hospital
Clifford Kennon, UAB Center for Clinical & Translational Science

Bryn Manzella, Jefferson County Department of Health
Dr. Raquel Mazer, UAB School of Dentistry
Kristie McCullough, Clarus Consulting Group
Dr. Ann Elizabeth Montgomery, UAB School of Public Health
Jason Perry, University of Montevallo
Dr. Amy Snow, Samford University, Nursing
Dr. Jocelyn Vickers, Auburn University
Greer McCollum, UAB School of Public Health
Dr. Samantha Giodrano-Mooga, UAB School of Health Professions



Scan to
learn more
or to make a
gift online in
support of
fellows



ASF Staff

Kimberly Eaton, Executive Director
Tiffany Adams, Development Manager



Albert Schweitzer Fellowship of Alabama

Post Office Box 660412
Birmingham, Alabama 35266
205.202.0695
www.asfalabama.org